



ECCC

MONTENEGRO

EUROPEAN CHESS CLUB CUP 2026

HERCEG NOVI, MONTENEGRO
16th OCTOBER – 24th OCTOBER



CU
European Chess Union



**EUROPEAN
CHESS CLUB CUP
2026**

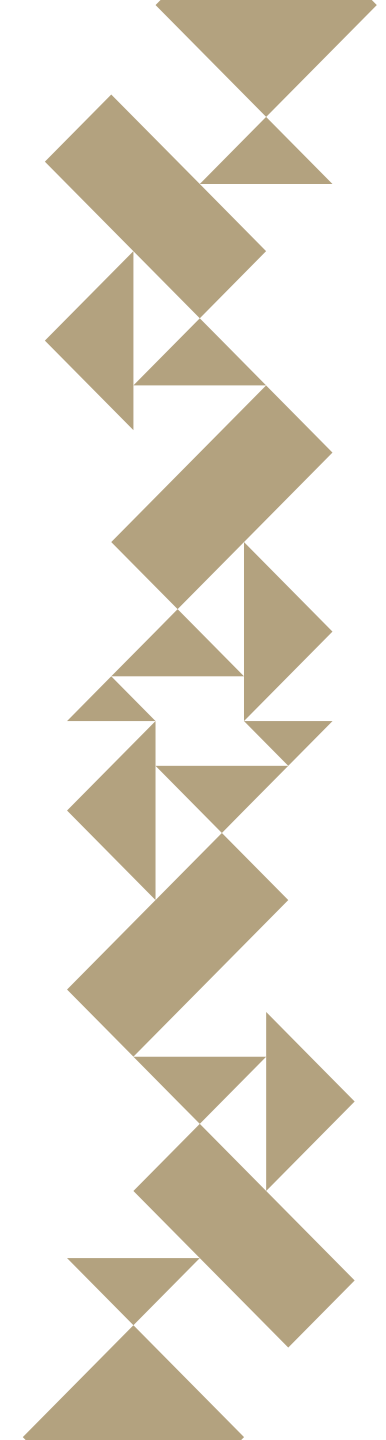
GENERAL REGULATION



1. INVITATION

Montenegro Chess Federation (MCF) and the European Chess Union (ECU) have the honor to invite all the National Federations affiliated to ECU to participate in the **41st EUROPEAN CLUB CUP** and the **30th EUROPEAN CLUB CUP FOR WOMEN**. The events will be held in Herceg Novi, Montenegro from 16th October (arrival) to 24th October 2026 (departure).

The Championship will be organized by the Chess Federation of Montenegro, under the auspices of the European Chess Union (ECU).



2. PARTICIPATION

2.1 The valid regulations to be followed for the European Club Cup are included in the “ECU Rulebook”. Each European federation is allowed to take part in this competition. According to the regulations, participation is open to:

- Five (5) clubs per federation in which a national team championship is organized or four (4) clubs per federation in which no national team championship is organized. There is no restriction how the clubs will be selected by the National Federations.
- Any additional request for participation should be examined by the ECU Board.
- In the Women competition all the club members of ECU Federations are allowed to participate.

2.2 Clubs shall be registered through the National Chess Federations or directly if there is no objection from the National Chess Federation.

2.3 All registrations must be submitted until deadline **10th August 2026**. After the deadline, for every late registration must be paid penalty of 300 EUR per club.

3. TEAM COMPOSITION

3.1 The open teams shall be composed of six (6) players plus two (2) reserves all of whom must be members of the club and were entitled to play for the club in the national team championship of the federation, which was organized within one year before the start of the current European Club Cup.

However, players who are foreigners to the federation in which the national team championship is organized, must have played at least two games in this championship. Foreigners are defined as those which are either belonging to another federation in the FIDE Rating list valid at the start of the national team championship or have a permanent residence outside the federation in which this national team championship is organized. National Players that competed in the last national team championship with another club are also subject to fees.

3.2 If a participating club wants to include a national or foreign player in the open competition who does not fulfil the requirements of article 3.1 (F.1.2. ECU rules) the club has to pay a reduced player's license fees to ECU according to the player's FIDE classical rating (each year is valid 1st July rating list):

- Rating 2700 and more 2000 EUR
- Rating 2600 and more 1500 EUR
- Rating 2500–2599 1000 EUR
- All the other player's license fees are waived for the year 2026

3.3 The women teams shall be composed of four (4) players plus one (1) reserve player. There is no restriction on the composition and all female player's license fees are waived for the year 2026

4. ECU ENTRY AND PLAYERS LICENSE FEES

4.1 In accordance with ECU regulations (article B.9.5.1) before or at the start of the competition each federation or club should pay the ECU entry fee of 300 EUR per participating club of the open competition and 200 EUR per participating club in the women competition.

4.2 Player's license fees where applicable shall be paid before the start of the tournament. ECU entry fees and player license fees should be paid directly to the European Chess Union bank account:

Bank: UBS Group AG

Bank address: Bahnhofstrasse 45, Postfach – 8098 Zürich

Bank SWIFT code: UBSWCHZH80A

IBAN Account Number: CH03 0024 6246 1903 5360 X

Account Holder: European Chess Union

4.3 Registration Fee.

Each player and accompanying person must pay registration fee of 100 € to confirm their participation. The registration fee of 100 EUR for all participants (players, captains, heads of delegation and accompanying persons) must be paid by registration deadline to the bank account of the organizer. This fee includes: accreditation, badges and transfer from and to the airport on the 16th October (arrival day) and 24th October (departure day).

5. REGISTRATION

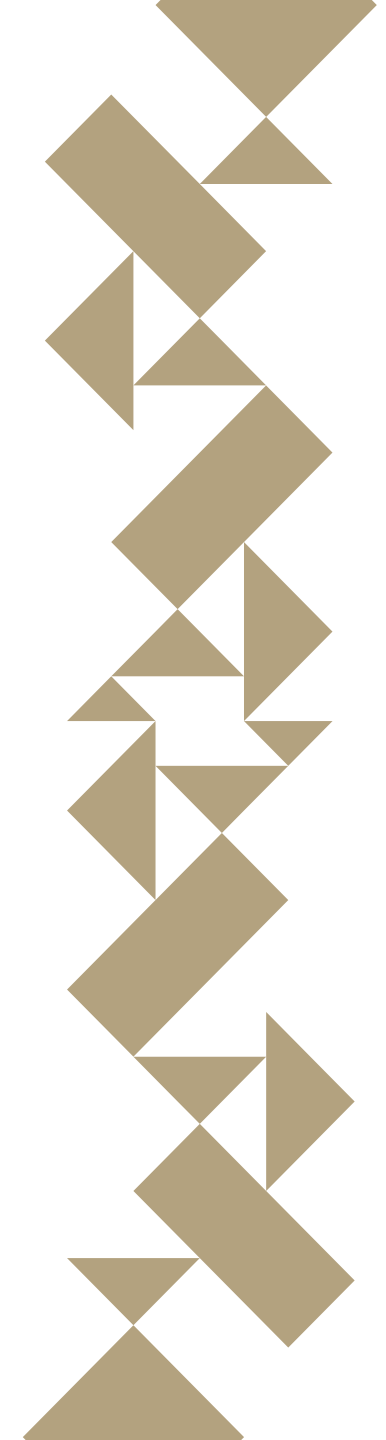
5.1 Every federation that intends to participate, with one or more clubs, must inform the Organizing Committee at the official email info@eccc26.me by **1st August 2026** of its acceptance of the invitation, specifying the exact number of the clubs participating. A copy should be sent also to the ECU Tournament Director Mr. Petr Pisk at the email petr.pisk@centrum.cz

5.2 Afterwards, entry forms must be completed and sent to the email info@eccc26.me no later than the registration deadline **10th August 2026**.

5.3 The basic team composition shall be submitted with the entry form. The complete registration form must include:

- Surname, First name, FIDE ID, FIDE rating, FIDE title and Passport number of each participant (player and acc. person).
- Name, telephone and email of the Chief of Delegation and person in charge of the Club.

The Organizing Committee will contact each of the teams to confirm the registration and booking.



5. REGISTRATION

5.4 Copies of the basic team composition should at the same time be sent to the ECU Tournament Director Mr. Petr Pisk at the email: petr.pisk@centrum.cz who will confirm the eligibility of the players. Basic players' list can be changed no later than one day before the Technical Meeting with a penalty of 200 EUR per player payable to ECU, excluding health problems or force majeure, confirmed in written form.

It is not necessary all the forms to be forwarded by the federations.

5.5 At the latest by the **10th August 2026** the complete amount of fees + 50% of the total accommodation cost must be transferred to the bank account of the Technical Organizer: **Lalatovic Travel D.O.O. Budva**. Full payment for the hotel accommodation must be completed no later than **10th September 2026**.

5.6 The foreign bank commissions must be paid by the sender. If not, the respective amount will be charged and should be paid upon arrival.

5.7 Entry Fees for withdrawals, or no-show shall be charged as follows as per FIDE Regulations on following link: <https://handbook.fide.com/chapter/D0401202312>

Payment instructions

Field 56 – Intermediary bank:

Swift Address: **DEUTDEFF**

Name: **Deutsche Bank AG Frankfurt**

Field 57 – Account with Institution:

Party Identifier: **100 9363045 0000**

Swift Address: **CKBCMEPG**

Name: **CRNOGORSKA KOMERCIJALNA BANKA AD PODGORICA**

Field 59 – Beneficiary Customer:

IBAN: **ME25510000000002650953**

Name & Address: **LALATOVIC TRAVEL D.O.O. BUDVA,
ZRTAVA FASIZMA BR.50 , 85310, Budva, MONTENEGRO**

6. ACCOMMODATION AND MEALS

6.1 Accommodation and full board will be provided at the Hotel “Medun” 4+*.

6.2 According to the article B.14.5.1 of the ECU Tournament Regulations the participating teams shall stay in the official hotel for the championship. Bookings are possible only through the Organizing Committee.

6.3 Prices

Rooms

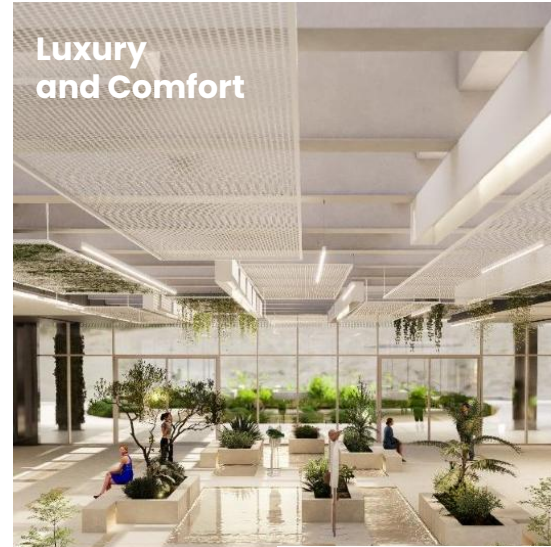
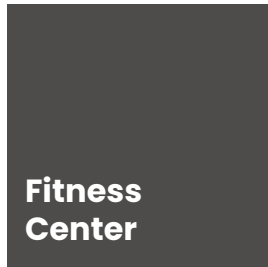
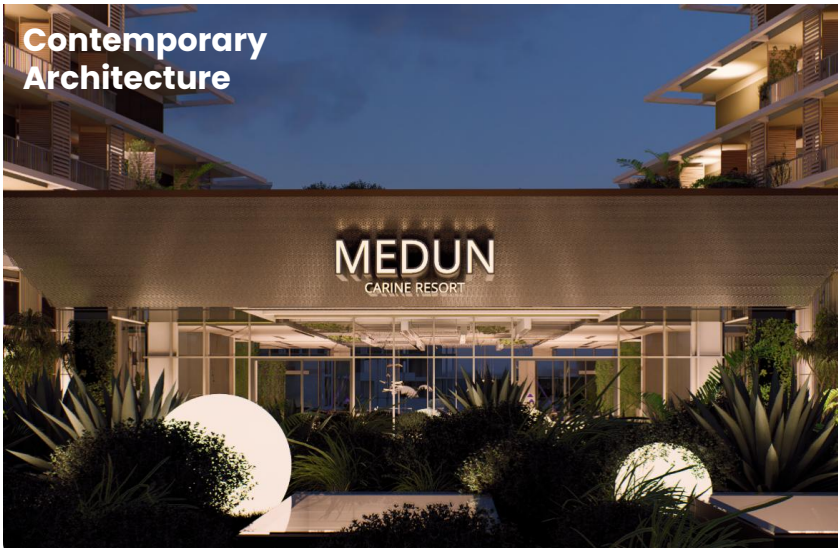
Room type	Price per day per person
Single room	126 €
Double room	86 €

Suites

Suites	Price per day per person
Single use	149 €
Double use	98 €

6. ACCOMMODATION AND MEALS

Medun Resort prioritizes luxury and comfort to ensure guests have a premium, relaxing experience. The hotel's design integrates modern architecture with elements inspired by local culture for a unique aesthetic, while Interiors combine style and comfort.



**Restaurants
Wine and
Cocktail bar
Beer house**



**Pools and
SPA Services**



7. PLAYING SCHEDULE

The championship will be held in Herceg Novi, Montenegro from 16th October 24th October 2026. Playing hall will be situated at the **Hotel “Medun” in Herceg Novi**.

Friday	16.10.2026	Arrival of Participants Opening ceremony Technical meeting	--- 20:00 22:00
Saturday	17.10.2026	Round 1	15:00
Sunday	18.10.2026	Round 2	15:00
Monday	19.10.2026	Round 3	15:00
Tuesday	20.10.2026	Round 4	15:00
Wednesday	21.10.2026	Round 5	15:00
Thursday	22.10.2026	Round 6	15:00
Friday	23.10.2026	Round 7	14:00
		Closing ceremony	21:00
Saturday	24.10.2026	Departure	---

* Teams who are not represented at the Technical meeting will not be paired according to the decision of ECU Board. Teams who can't attend the Technical meeting shall inform the Chief Arbiter or Tournament Director in advance to confirm their participation.

8. TROPHIES AND PRIZE FUND

8.1 The first three teams will receive trophies. Each team member of the winning clubs open & women (players, reserve players and captain) will receive a gold medal. The team members of the 2nd and 3rd placed clubs will receive silver and bronze medals.

8.2 For the best placed clubs and for the individual results for the best board result in the Open competition, prizes fund of 26,000.00 EUR will be provided. For the best placed clubs and for the individual results for the best board result in the women competition, prizes fund of 14,000.00 EUR will be provided. The total prizes fund of 40,000.00 EUR will be distributed as shown in the table.

8.3 In the case that teams end with the same number of match points, money prizes shall be shared according to the Hort system (among such number of teams which corresponds to the number of advertised prizes).

For the individual prizes the players performance score is calculated if the player takes part in at least 70% of the rounds (for basic players) or 50% of the rounds (for reserve players). The reserve players are competing in the 6th Board in Open and in the 4th Board in Women Club Cup.

Place	OPEN	WOMEN
1st place	8,000.00 €	5,500.00 €
2nd place	6,000.00 €	3,500.00 €
3rd place	4,000.00 €	2,000.00 €
4th place	2,500.00 €	1,000.00 €
5th place	1,500.00 €	
6th place	1,000.00 €	
Total:	23,000.00 €	12,000.00 €
Individually the best performance per board =500 EUR	6*500	4*500
Total:	26,000.00 €	14,000.00 €

9. EUROPEAN CHESS SUPER LEAGUE

9.1 A New Era for the European Chess. A second prestigious trophy for clubs.

The European Chess Super League, 2-10 February 2027, brings together eight (8) the strongest chess clubs to compete for a prize fund of €300,000. The event will showcase world-class talent, thrilling matches, and a commitment to sporting excellence and innovation.

9.2 Main qualification **path is the European Chess Club Cup 2026**, 5 teams (out of 8) will qualify through the European Chess Club Cup 2026:

A. The top 4 finishers from the European Chess Club Cup 2026, will qualify for the European Chess Super league 2027.

B. The highest - rated team that is not among the top 4 finishers , will qualify for the European Chess Super league 2027.



10. TOURNAMENT REGULATIONS

10.1 The championships will be held in seven rounds, played in the Swiss system in accordance with the ECU Tournament Rules. If there are eight teams or less in a competition, the competition will be played as a Round Robin tournament. In such case the drawing of lots will take place at the Captain's Meeting. If there are 9-12 teams in a competition, the competition will be played by a combined system according to the ECU Rulebook.

10.2 The order of teams that finish with the same number of match points shall be determined by application of the following tie-breaking procedures in sequence, proceeding from (a) to (b) to (c) to (d) the extent required:

- a)** by the sum of Sorbonne-Berger points, which is calculated as follows: match points of each opponent, excluding the opponent who scored the lowest number of match points, multiplied by the number of board points scored against each opponent respectively. The highest number wins. In case of two or more opponents with this same number of matches points the lowest results of multiplication should be excluded
- b)** by the number of board points won, the highest number wins.
- c)** by the sum of the board points of all team's opponents, the highest number wins
- d)** by the sum of the board points of all opponents defeated plus one half of the board points of all the opponents with which a tied result was achieved, the highest number wins

10.3 According to ECU rules, the time control will be 90 minutes for 40 moves plus 30 minutes for the rest of the game with an increment of 30 seconds per move, starting from move one. Players may only agree to a draw after the 30th move has been made by black. Players violating this rule will be forfeited. If a player is offered a draw before the 30th move has been made by black, he should call an arbiter. His opponent shall be punished for distracting, according to the FIDE Laws of Chess.

11. ADDITIONAL COMPETITION RULES

11.1 The default time is 15 minutes.

11.2 Analyzing is not allowed in the playing hall. Flash photography may be used only in the first ten (10) minutes of the playing session. Only the players, captains, arbiters, and appeals Committee members, shall be allowed in the playing area, except with the expressed permission of the Chief Arbiter. Players are not allowed to enter the closed area of the top boards if they don't play there themselves.

11.3 During a game a player may talk only to an arbiter or his captain in compliance with the ECU Rulebook. A players may also talk to his opponent within the limitations given by the Laws of Chess.

11.4 FIDE Titles and Norms will be awarded in accordance with FIDE regulations. **This competition is offering the possibility to achieve GM or IM norms based on seven games.**

11.5 No teams of federations which have financial arrears with respect to the European Chess Union will be allowed to enter the competition.

11.6 The ECU Rule for dress code is valid for all European Championships.

11.7 The European Anti-Cheating rules are valid for all European Championships (Article Q of the ECU Tournament Rules).

11.8 It is assumed that all the players have read the ECU Rulebook and accept to conform to them.

12. ARBITERS AND APPEALS COMMITTEE

The Appeals Committee, Chief Arbiter, and two Deputy Arbiters of the competition will be announced by the European Chess Union.

13. VISA INFORMATION

13.1 Those who need visas must submit their data by 10th August 2026.

13.2 To proceed with the visa application, each federation must fill it out in registration form and email it to the organizing committee along with PDF scans of the participant's passports, which must be valid for more than six months.

13.3 The Organizers will provide VISA assistance according to National laws.

13.4 The Organizers are not responsible in case the Montenegrin authorities decline to issue the VISA due to failing to meet all the requirements to obtain an Italian VISA. Information about visa regime for the entry of foreign citizens into Montenegro you can find on following link:

<https://www.gov.me/en/diplomatic-missions/embassies-and-consulates-of-montenegro>

14. TRANSPORT

14.1 The organizer will arrange transfers between the airports (Podgorica or Tivat) and the hotel. Transfer is free for all players and accredited persons on the first day 16th October (arrival day) and the last day 24th October (departure day). On other days transfer can be ordered for 30 EUR per person one-way.

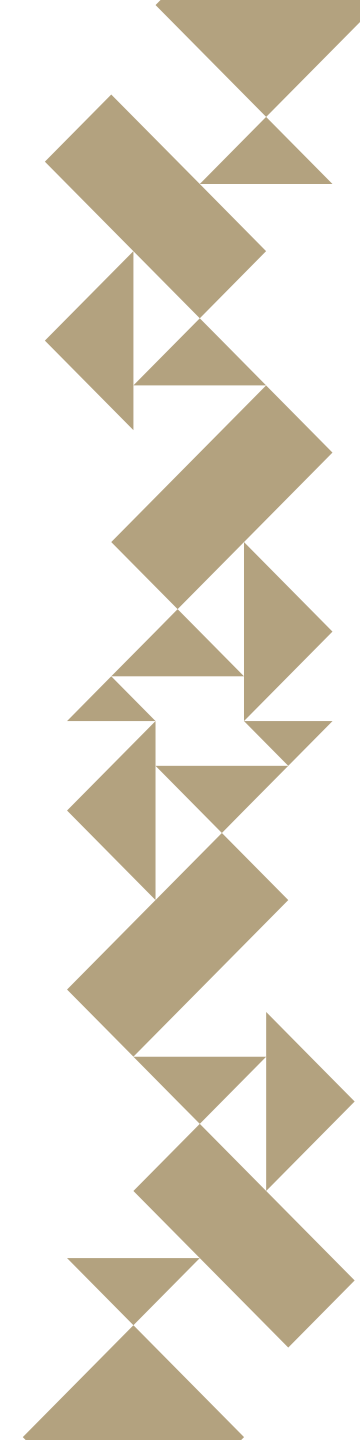
14.2 Specially organizer will provide transportation from airports Dubrovnik (Croatia) and Tirana (Albania) upon request.

15. ELECTRICITY

In Montenegro the power plugs and sockets are of type F and L. The standard voltage is 230 V and the standard frequency is 50 Hz.

16. CURRENCY & EXCHANGE

The local currency is the Euro (€).





17. CONTACT

E-mail: info@eccc26.me

Official website: www.eccc26.me

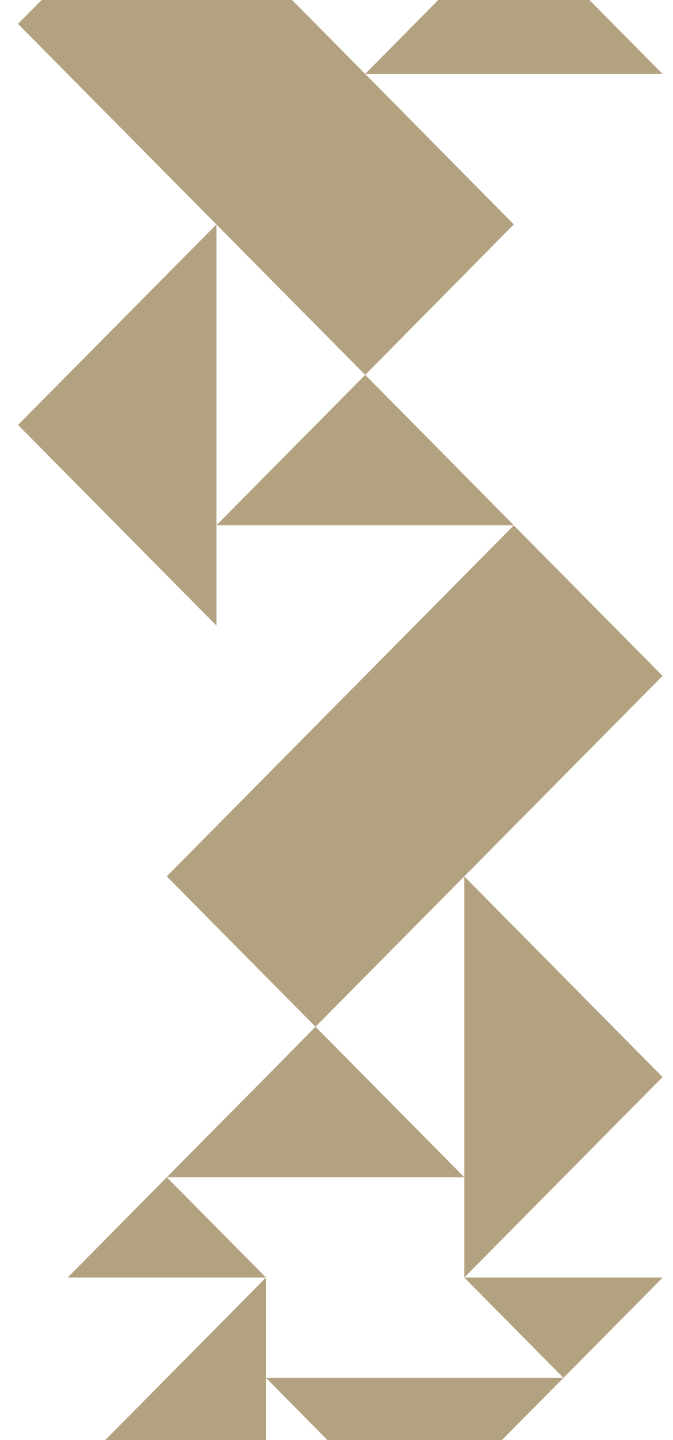
Tournament Director:

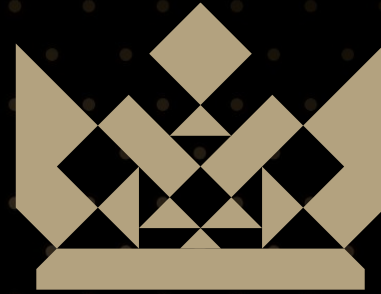
Milovic Jovan, IO

Phone: **+382 67 600 471**  

Organizing Committee:

Phone: **+382 67 237 360**  





**EUROPEAN
CHESS CLUB CUP
2026**

www.eccc26.me

